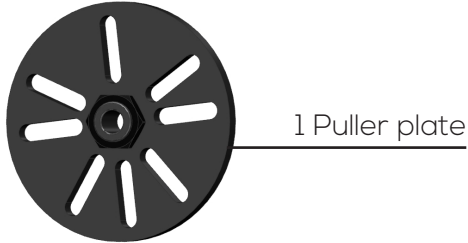


5180 Hub Puller

Content



17 Male Adaptors

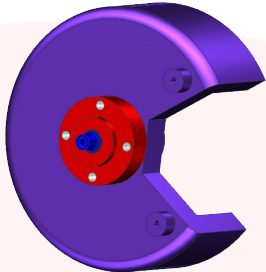
4	M12 x 1,25
4	M12 x 1,50
4	M14 x 1,50
4	M16 x 1,50
1	M20 x 1,50



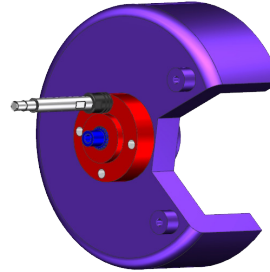
16 Female Adaptors

4	M12 x 1,25
4	M12 x 1,50
4	M14 x 1,50
4	M16 x 1,50

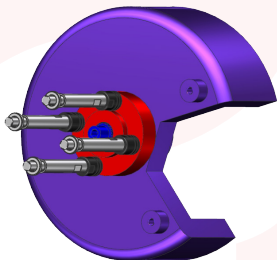
Instructions



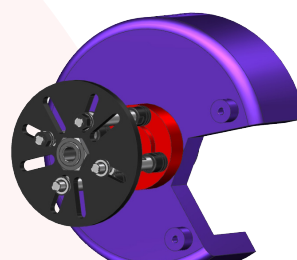
1- Remove wheel, brakes, Disk.



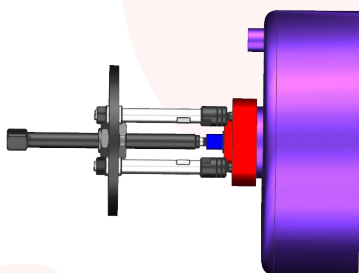
2- Pick the adaptor fitting the thread.



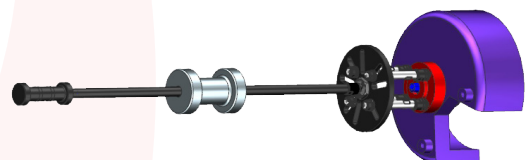
3 - Use the necessary extensions.
4 Screws 4 Extensions
5 Screws 3 Extensions
6 screws 3 AExtensions



4- Place the puller plate



5- You can place the spindle as if to push against the Axle or to pull out the hub, (wheels without traction)



6- Mount the slide hammer to remove the hub. (no included in this set)